

Hybrid Bearings with Ceramic Balls

Hybrid bearings using ceramic balls are designed for applications where high grade electrical isolation is necessary and / or high speeds occur. The bearing lifetime is extended because electrical corrosion can not occur and high speed operation seizures are avoided. The robust design, together with a combination of steel and ceramics, makes the bearings useful for many different applications.

Product Features

- Ceramic balls
- Precision machined tough solid brass cage
- Bore diameter up to 180 mm
- ISO standard dimensions
- Same load capacity as standard steel bearing

Benefits

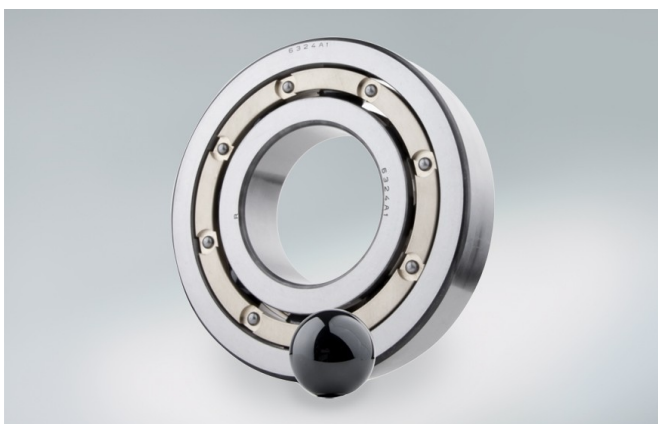
- Total electric isolation
- Reduced friction
- Less centrifugal force of roller set
- Extended lifetime

Condition Description

- Arduous Environments
- Corrosive Environment

Industries

- Machine Tools
- Power Generation



6324 SN24 MR C3

Description

| | |
|------|----------------------------------|
| 6324 | Basic Bearing Type |
| SN24 | Material (Ceramic Balls) |
| MR | Cage (Brass Cage, roller guided) |
| C3 | Radial Internal Clearance |